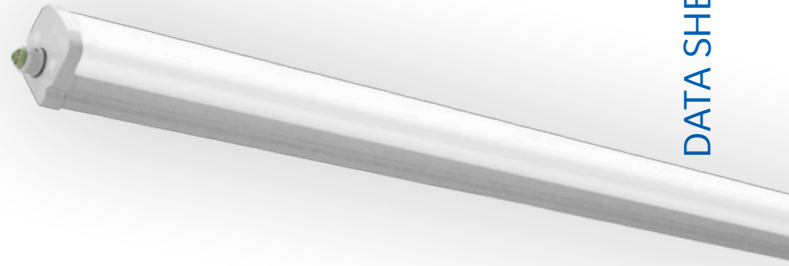


LED Integrated Mariner



IP65 IK08 CLASS II CE CB

Product information

This fixture has an attractive, neutral aesthetics that makes it suitable for applications in both commercial, residential and industrial environments. It is an energy-efficient, low maintenance alternative to traditional fluorescent waterproof fixtures. The integrated mariner offers customers the best mix of value and performance. It has compact size with high lumen output and completely integrable lighting solution for applications with high requirements for luminous intensity and resistance.

Features

- High performance with outstanding efficiency with 4 lumen packages – up to 126 lm/W
- 50 000 hours lifetime (L70)
- 2 colour temperatures: 4000 and 6500K with SDCM <6
- Wide beam angle of 125 degree
- Linear luminaire with high protection rating (IP65) and high impact resistance (IK08) make integrated LED mariner the ideal solution in challenging ambient conditions
- Suitable for operation in ambient temperature of -20°C to +40°C
- Integrated through-wiring 2x1.5mm²
- Quick connector solution on both ends of the fixture to allow single fixture or continuous fixture installations
- Static built-in driver
- PF >0,9
- THD < 20%
- Nominal Voltage: 220-240V
- Operating frequency: 50-60Hz
- High (850°C) Glow wire temperature
- Certificates: CE, CB, TÜV
- Insulation Class II
- Breather valve to maintain good waterproofness in case of over pressurization

Benefits

- Energy savings of up to 62% (compared to luminaires that use fluorescent lamps)
- Uniform light
- Convenient, continuous connection for both sizes of 1200mm and 1500mm, simple and easy installation options
- High resistance against ambient air with humidity and high particle loads
- Simple refurbishment solution thanks to use of existing installation points with freely positionable mounting clips
- Fast and simple installation due to quick connector design

Application areas



Industrial



Car park



Retail

Structures and materials

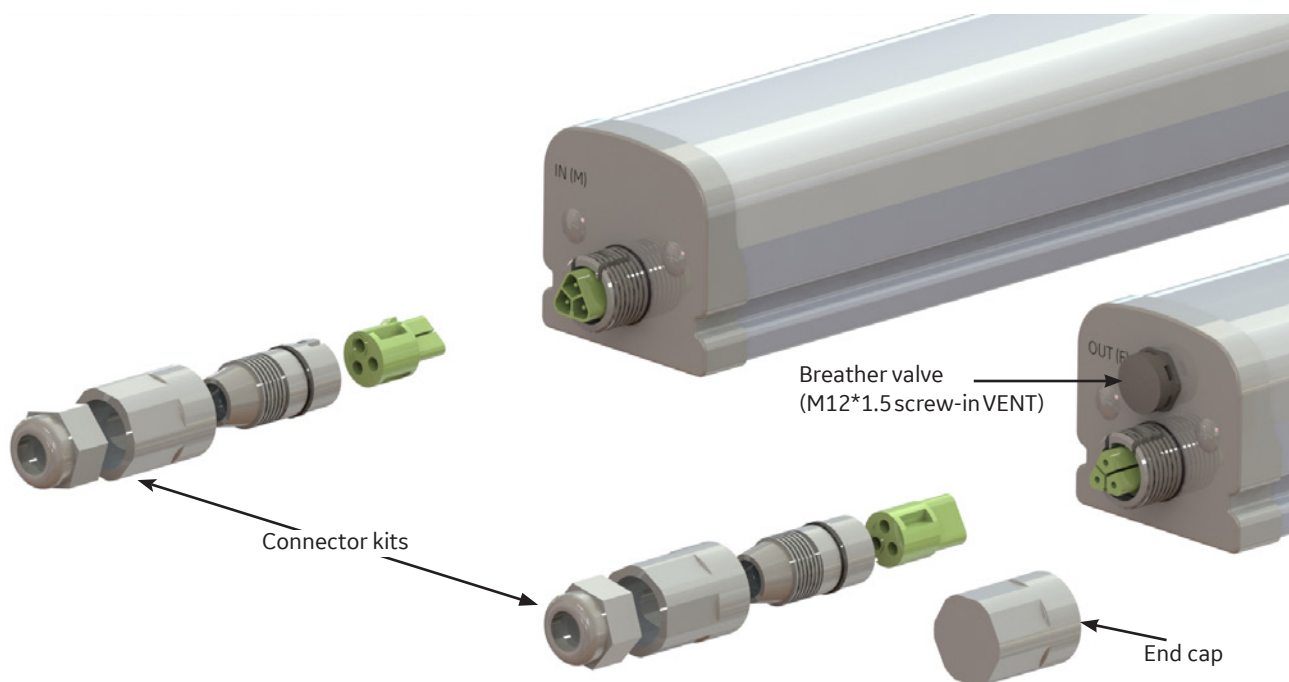
- Body: impact-resistant, polycarbonate cover
- UV stabilized, flame retardant polycarbonate with improved light transmission and good colorstability under heat exposure
- Colour: grey
- Sealing material between the shell and cover in PU (polyurethane), which offers the lamp excellent waterproof ability
- Waterproof plastic wiring connector with rubber gasket on one side of the fitting
- Convenient assembly bracket for ceiling mount, also opportunities for wall mounting with metal parts
- Small size profile and lightweight design
- All accessories for fixing are included in the package:



Wall mounting metal is 304 stainless steel
Kits are packed to ensure end users can fix the fixture
Fix to the ceiling: 2pcs wall mount clips plus 2 pcs of screws

Electrical connection

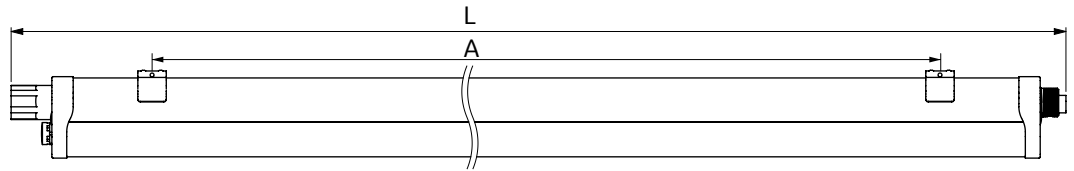
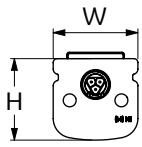
- All accessories for electrical connection are included in the package
- 3 poles waterproof connector max. 2.5mm²
- Cable entry for cables D=6-9mm



Specification summary

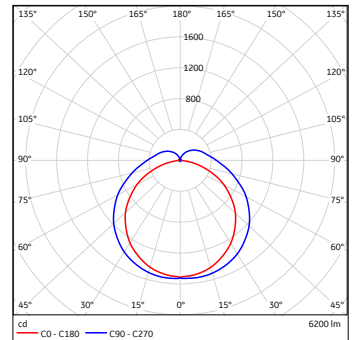
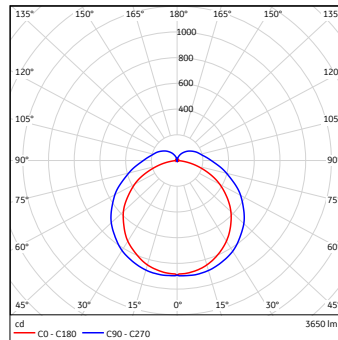
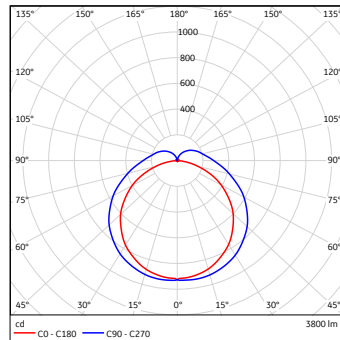
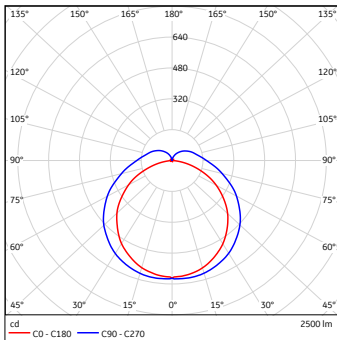
Product Code	Description Code	Wattage (W)	Lumen (lm)	Efficiency (lm/W)	CCT (K)	CRI	Current (mA)	Replacement for LFL	Dimmable	Weight (kg)
93055991	MPY4F-2040-7SB-STLT	20	2 500	125	4000	> 80	93	1 x 36W	No	0,9
93055993	MPY4F-2065-7SB-STLT	20	2 500	125	6500	> 80	93		No	0,9
93055995	MPY4F-3040-7SB-STLT	30	3 800	126,5	4000	> 80	143	2 x 36W	No	0,9
93055997	MPY4F-3065-7SB-STLT	30	3 800	126,5	6500	> 80	143		No	0,9
93055999	MPY5F-3040-7SB-STLT	30	3 650	121,5	4000	>80	138	1 x 58W	No	1,12
93056001	MPY5F-3065-7SB-STLT	30	3 650	121,5	6500	>80	138		No	1,12
93056003	MPY5F-4940-7SB-STLT	49	6 200	126,5	4000	>80	229	2 x 58W	No	1,15
93056005	MPY5F-4965-7SB-STLT	49	6 200	126,5	6500	>80	229		No	1,15

Dimensions (mm)



Type	L (mm)	W (mm)	H (mm)
MPY4F-2040-7SB-STLT	1170	66	63
MPY4F-2065-7SB-STLT	1170	66	63
MPY4F-3040-7SB-STLT	1170	66	63
MPY4F-3065-7SB-STLT	1170	66	63
MPY5F-3040-7SB-STLT	1470	66	63
MPY5F-3065-7SB-STLT	1470	66	63
MPY5F-4940-7SB-STLT	1470	66	63
MPY5F-4965-7SB-STLT	1470	66	63

Photometric data



Photometry is based on LM79

Order logic

Internal Code	Length	Space Holder	System Wattage	CCT	Space Holder	Voltage	Controller	Driver	Space Holder	Special	Glow wire temperature	Shipment
MP = Mariner Premium	4F = 4 Feet 5F = 5 Feet	-	20 = 20W 30 = 30W 49 = 49W	40 = 4000K 65 = 6500K	-	7 = 220- 240V	S = Static	B = Built-in	-	EM = Emergency ST = Standard version	LT = Low Temp. 850° HT = High Tem- perature 960°	DS = Direct Shipment

Example

MPY4F-2040-7SB-STLT

4ft, 20W 4000K Mariner, Static, 220-240V built-in driver, standard version with 850C glow wire temp