



Impressive variety for a wide range of applications

RANA Linear

RANA Linear is a slim, sleek and unobtrusive range of LED luminaires designed to fulfill a wide range of applications including educational environments, medical buildings, storage facilities, offices, data centres, long corridors and other circulation areas. RANA Linear offers the possibility to mix and match recessed and / or surface luminaires in a single lighting scheme.

The range features 3 different light distributions with 3 different optics: Opal diffuser (UGR<23), Micro Prismatic optic (UGR<21), and Louvre + Prismatic optic (UGR<19), ideal for Display Screen Equipment (DSE) workstations.

RANA Linear can be remotely controlled with 1-10V or DALI (Switch-Dim) systems and also features the SylSmart Connected and SylSmart Standalone functions.

SylSmart Standalone is a wireless, plug and play lighting control solution which is ideal for any applications where easy installations, low upfront cost and low maintenance are essential. SylSmart Connected is a wireless, intelligent lighting control system offering a sustainable solution for office applications achieving high energy efficiency without compromising the comfort of occupants.



RANA Linear



Features

- Slim recessed, surface or suspended luminaires
- Sleek and unobtrusive square profile design, to mix and match recessed and / or surface luminaires in a single lighting scheme
- Can be mounted individually or in continuous runs with seamless light effect
- Available in warm white (3,000K) or neutral white (4,000K)
- L80B50 @ 60,000 hours. Long service life with luminous flux maintenance: 80% of its initial value at 60,000 hours
- 3 different optics offer 3 different light distributions with visual comfort and efficiency
- Low glare: UGR<19 with the Louvre + Prismatic Optic for Display Screen Equipment (DSE) workstations
- 3,000lm lumen package on 1.2m length, up to 2,894 lm/metre
- High luminaire efficiency up to 120 lm/W (total system efficiency on RANA Linear Louvre + Prismatic Optic)
- Colour Rendering Index (Ra) > 80 for office applications
- LED Colour Consistency between multiple luminaires: 3 SDCM
- Colour: White RAL 9016 as standard, other colours on request
- Closed optical system with protective covers on LED modules
- 3 hour emergency versions
- Available in Constant Current, DALI (Switch-Dim), 1-10V, SylSmart Connected and SylSmart Standalone
- Glow Wire Test: 850°C for all versions - Polycarbonate diffusers are UK TP(a) compliant
- In continuous installation SylSmart Connected DALI luminaire can control up to 3 additional DALI dimmable luminaires

Recessed



Micro Prismatic Optic (MPO)

Louvre + Prismatic Optic

Opal

Surface & Suspended



Micro Prismatic Optic (MPO)

Louvre + Prismatic Optic

Opal



RANA Linear Recessed - Micro Prismatic Optic

Features

- Controlled light distribution with Micro Prismatic Optics
- Thin ceilings installation brackets: for 1mm to 20mm ceiling thickness
- Thick ceiling installation brackets: 21mm to 40mm ceiling thickness
- Can be covered with building insulation of glass wool type



Micro Prismatic Optic (MPO)

Product information

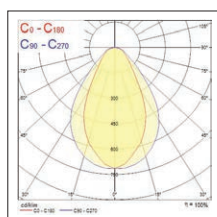
Code	Description	Fixture Power (W)	Luminous Flux (lm)	Efficacy (lm/W)	Colour Temperature (K)	CRI	Dimmable	Control Technology	UGR
RANA Linear - Micro Prismatic Optic (MPO)									
3000K									
0052343	RANA Linear R 3KLM WW MPO	31	3030	97	3000	80	No	-	<21
0052344	RANA Linear R 3KLM WW MPO D	31	3030	97	3000	80	Yes	DALI	<21
0052345	RANA Linear R 3KLM WW MPO 1-10	31	3030	97	3000	80	Yes	1-10V	<21
0044915	RANA Linear R 3KLM WW MPO SSA02	31	2900	93	3000	80	Yes	SylSmart Connected	<21
0044914	RANA Linear R 3KLM WW MPO D SSA02	31	2900	93	3000	80	Yes	DALI + SylSmart Connected	<21
4000K									
0052340	RANA Linear R 3KLM NW MPO	31	3100	100	4000	80	No	-	<21
0052341	RANA Linear R 3KLM NW MPO D	31	3100	97	4000	80	Yes	DALI	<21
0052342	RANA Linear R 3KLM NW MPO 1-10	31	3100	100	4000	80	Yes	1-10V	<21
0052477	RANA Linear R 3KLM NW MPO SSC01	32	3100	97	4000	80	Yes	SylSmart Standalone	<21
0044917	RANA Linear R 3KLM NW MPO SSA02	31	3100	100	4000	80	Yes	SylSmart Connected	<21
0044916	RANA Linear R 3KLM NW MPO D SSA02	31	3100	100	4000	80	Yes	DALI + SylSmart Connected	<21
0052348	RANA Linear R 3KLM NW MPO EM	35	2890	82	4000	80	No	-	<21
0052349	RANA Linear R 3KLM NW MPO D EM	35	2890	82	4000	80	Yes	DALI	<21
0052350	RANA Linear R 3KLM NW MPO 1-10 EM	35	2890	82	4000	80	Yes	1-10V	<21

Legend: R = Recessed; KLM = kilo Lumen; NW = Neutral White (4000K); WW = Warm White (3000K); TW = Tunable White (3000-6000K), MPO = Micro Prismatic Optic; LOUV+PRI = Louvre + MicroPrismatic Optic; OPAL = Opal Diffuser; D = DALI; 1-10 = Analogue 1-10V; SSA = SylSmart Connected; SSC = SylSmart Standalone; EM = Emergency

Additional images

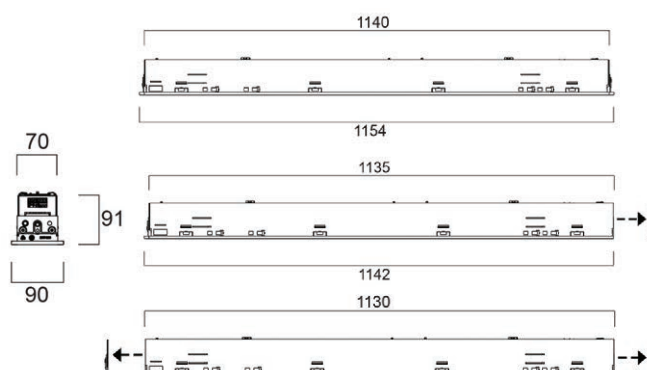


Photometric Data



MPO 4000K

Dimensions (mm)



RANA Linear Recessed - Louvre + Prismatic Optic

Features

- Optimal visual comfort (UGR<19) with Louvre + Prismatic Optics
- Up to 120 lm/W efficacy
- Thin ceilings installation brackets: for 1mm to 20mm ceiling thickness
- Thick ceiling installation brackets: 21mm to 40mm ceiling thickness
- Can be covered with building insulation of glass wool type



Louvre + Prismatic

Product information

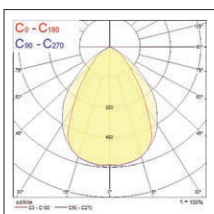
Code	Description	Fixture Power (W)	Luminous Flux (lm)	Efficacy (lm/W)	Colour Temperature (K)	CRI	Dimmable	Control Technology	UGR
RANA Linear - Louvre + Prismatic Optic									
3000K									
0052355	RANA Linear R 3KLM WW LOUV+PRI	27	3200	118	3000	80	No	-	<19
0052356	RANA Linear R 3KLM WW LOUV+PRI D	27	3200	118	3000	80	Yes	DALI	<19
0052357	RANA Linear R 3KLM WW LOUV+PRI 1-10	27	3200	118	3000	80	Yes	1-10V	<19
0044911	RANA Linear R 3KLM WW LOUV+PRI SSA02	28	2900	103	3000	80	Yes	SylSmart Connected	<19
0044910	RANA Linear R 3KLM WW LOUV+PRI D SSA02	28	2900	103	3000	80	Yes	DALI + SylSmart Connected	<19
4000K									
0052352	RANA Linear R 3KLM NW LOUV+PRI	27	3250	120	4000	80	No	-	<19
0052353	RANA Linear R 3KLM NW LOUV+PRI D	27	3250	120	4000	80	Yes	DALI	<19
0052354	RANA Linear R 3KLM NW LOUV+PRI 1-10	27	3250	120	4000	80	Yes	1-10V	<19
0052479	RANA Linear R 3KLM NW LOUV+PRI SSC01	28	3250	116	4000	80	Yes	SylSmart Standalone	<18
0044913	RANA Linear R 3KLM NW LOUV+PRI SSA02	28	3050	108	4000	80	Yes	SylSmart Connected	<19
0044912	RANA Linear R 3KLM NW LOUV+PRI D SSA02	28	3050	108	4000	80	Yes	DALI + SylSmart Connected	<19
0052360	RANA Linear R 3KLM NW LOUV+PRI EM	31	3160	101	4000	80	No	-	<19
0052361	RANA Linear R 3KLM NW LOUV+PRI D EM	31	3160	101	4000	80	Yes	DALI	<19
0052362	RANA Linear R 3KLM NW LOUV+PRI 1-10 EM	31	3160	101	4000	80	Yes	1-10V	<19
Tunable White									
0052485	RANA Linear R 3KLM TW LOUV+PRI SSC01	31	2900	94	3000-6000	80	Yes	SylSmart Standalone	<17

Legend: R = Recessed; KLM = kilo Lumen, NW = Neutral White (4000K); WW = Warm White (3000K); TW = Tunable White (3000-6000K), MPO = Micro Prismatic Optic; LOUV+PRI = Louvre + MicroPrismatic Optic; OPAL = Opal Diffuser; D = DALI; 1-10 = Analogue 1-10V; SSA = SylSmart Connected; SSC = SylSmart Standalone; EM = Emergency

Additional images



Photometric Data



Louvre + Prismatic Optic 4000K



RANA Linear Recessed - Opal Diffuser

Features

- Pure line of light with Opal diffuser
- Thin ceilings installation brackets: for 1mm to 20mm ceiling thickness
- Thick ceiling installation brackets: 21mm to 40mm ceiling thickness
- Can be covered with building insulation of glass wool type



Opal

Product information

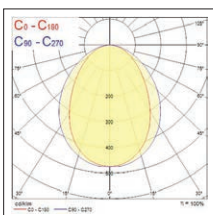
Code	Description	Fixture Power (W)	Luminous Flux (lm)	Efficacy (lm/W)	Colour Temperature (K)	CRI	Dimmable	Control Technology	UGR
RANA Linear - Opal Diffuser									
3000K									
0052367	RANA Linear R 3KLM WW OPAL	31	3220	103	3000	80	No	-	<23
0052368	RANA Linear R 3KLM WW OPAL D	31	3220	103	3000	80	Yes	DALI	<23
0052369	RANA Linear R 3KLM WW OPAL 1-10	31	3220	103	3000	80	Yes	1-10V	<23
0044919	RANA Linear R 3KLM WW OPAL SSA02	32	3150	98	3000	80	Yes	SylSmart Connected	<23
0044918	RANA Linear R 3KLM WW OPAL D SSA02	32	3150	98	3000	80	Yes	DALI + SylSmart Connected	<23
4000K									
0052364	RANA Linear R 3KLM NW OPAL	31	3270	105	4000	80	No	-	<23
0052365	RANA Linear R 3KLM NW OPAL D	31	3270	105	4000	80	Yes	DALI	<23
0052366	RANA Linear R 3KLM NW OPAL 1-10	31	3270	105	4000	80	Yes	1-10V	<23
0052481	RANA Linear R 3KLM NW OPAL SSC01	32	3270	102	4000	80	Yes	SylSmart Standalone	<23
0044921	RANA Linear R 3KLM NW OPAL SSA02	32	3300	103	4000	80	Yes	SylSmart Connected	<23
0044920	RANA Linear R 3KLM NW OPAL D SSA02	32	3300	103	4000	80	Yes	DALI + SylSmart Connected	<23
0052372	RANA Linear R 3KLM NW OPAL EM	35	3210	91	4000	80	No	-	<23
0052373	RANA Linear R 3KLM NW OPAL D EM	35	3210	91	4000	80	Yes	DALI	<23
0052374	RANA Linear R 3KLM NW OPAL 1-10 EM	35	3210	91	4000	80	Yes	1-10V	<23

Legend: R = Recessed; KLM = kilo Lumen; NW = Neutral White (4000K); WW = Warm White (3000K); TW = Tunable White (3000-6000K); MPO = Micro Prismatic Optic; LOUV+PRI = Louvre + MicroPrismatic Optic; OPAL = Opal Diffuser; D = DALI; 1-10 = Analogue 1-10V; SSA = SylSmart Connected; SSC = SylSmart Standalone; EM = Emergency

Additional images



Photometric Data



MPO 4000K

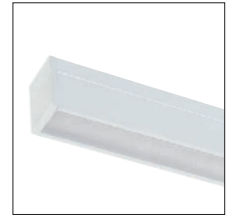




RANA Linear Surface and Suspended - Micro Prismatic Optic

Features

- Controlled light distribution with Micro Prismatic Optics
- Surface mount as standard
- Accessories available for suspension and continuous run installations
- 87mm square profile



Micro Prismatic Optic (MPO)

Product information

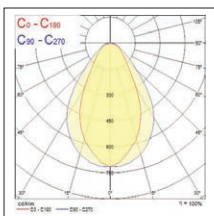
Code	Description	Fixture Power (W)	Luminous Flux (lm)	Efficacy (lm/W)	Colour Temperature (K)	CRI	Dimmable	Control Technology	UGR
RANA Linear - Micro Prismatic Optic (MPO)									
3000K									
0051253	RANA Linear S 3KLM WW MPO	31	3030	97	3000	80	No	-	<21
0051254	RANA Linear S 3KLM WW MPO D	31	3100	97	3000	80	Yes	DALI	<21
0051255	RANA Linear S 3KLM WW MPO 1-10	31	3030	97	3000	80	Yes	1-10V	<21
0044927	RANA Linear S 3KLM WW MPO SSA02	31	2900	93	3000	80	Yes	SylSmart Connected	<21
0044926	RANA Linear S 3KLM WW MPO D SSA02	31	2900	93	3000	80	Yes	DALI + SylSmart Connected	<21
4000K									
0051250	RANA Linear S 3KLM NW MPO	31	3100	100	4000	80	No	-	<21
0051251	RANA Linear S 3KLM NW MPO D	31	3100	100	4000	80	Yes	DALI	<21
0051252	RANA Linear S 3KLM NW MPO 1-10	31	3100	100	4000	80	Yes	1-10V	<21
0051339	RANA Linear S 3KLM NW MPO SSC01	32	3100	97	4000	80	Yes	SylSmart Standalone	<21
0044929	RANA Linear S 3KLM NW MPO SSA02	31	3100	100	4000	80	Yes	SylSmart Connected	<21
0044928	RANA Linear S 3KLM NW MPO D SSA02	31	3100	100	4000	80	Yes	DALI + SylSmart Connected	<21
0051258	RANA Linear S 3KLM NW MPO EM	35	2890	82	4000	80	No	-	<21
0051259	RANA Linear S 3KLM NW MPO D EM	35	2890	82	4000	80	Yes	DALI	<21
0051260	RANA Linear S 3KLM NW MPO 1-10 EM	35	2890	82	4000	80	Yes	1-10V	<21

Legend: S = Surface or Suspended; KLM = kilo Lumen; NW = Neutral White (4000K); WW = Warm White (3000K); TW = Tunable White (3000-6000K), MPO = Micro Prismatic Optic; LOUV+PRI = Louvre + MicroPrismatic Optic; OPAL = Opal Diffuser; D = DALI; 1-10 = Analogue 1-10V; SSA = SylSmart Connected; SSC = SylSmart Standalone; EM = Emergency

Additional images

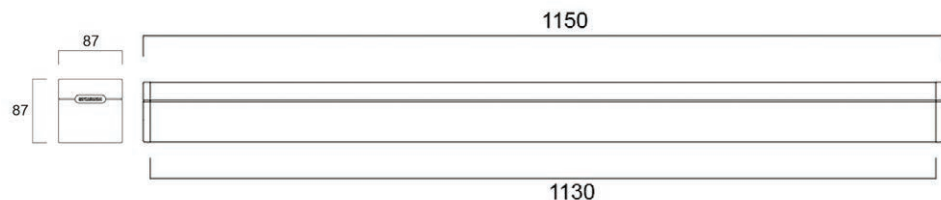


Photometric Data



MPO 4000K

Dimensions (mm)

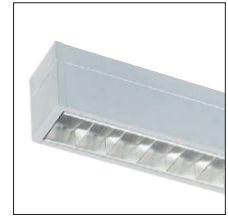




RANA Linear Surface and Suspended - Louvre + Prismatic Optic

Features

- Optimal visual comfort (UGR<19) with Louvre + Prismatic Optics
- Up to 120 lm/W efficacy
- Surface mount as standard
- Accessories available for suspension and continuous run installations
- 87mm square profile



Louvre + Prismatic Optic

Product information

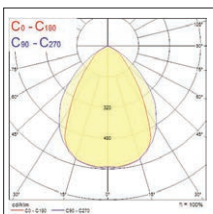
Code	Description	Fixture Power (W)	Luminous Flux (lm)	Efficacy (lm/W)	Colour Temperature (K)	CRI	Dimmable	Control Technology	UGR
RANA Linear - Louvre + Prismatic Optic									
3000K									
0051265	RANA Linear S 3KLM WW LOUV+PRI	27	3200	118	3000	80	No	-	<19
0051266	RANA Linear S 3KLM WW LOUV+PRI D	27	3200	118	3000	80	Yes	DALI	<19
0051267	RANA Linear S 3KLM WW LOUV+PRI 1-10	27	3200	118	3000	80	Yes	1-10V	<19
0044923	RANA Linear S 3KLM WW LOUV+PRI SSA02	28	2900	103	3000	80	Yes	SylSmart Connected	<19
0044922	RANA Linear S 3KLM WW LOUV+PRI D SSA02	28	2900	103	3000	80	Yes	DALI + SylSmart Connected	<19
4000K									
0051262	RANA Linear S 3KLM NW LOUV+PRI	27	3250	120	4000	80	No	-	<19
0051263	RANA Linear S 3KLM NW LOUV+PRI D	27	3250	120	4000	80	Yes	DALI	<19
0051264	RANA Linear S 3KLM NW LOUV+PRI 1-10	27	3250	120	4000	80	Yes	1-10V	<19
0051341	RANA Linear S 3KLM NW LOUV+PRI SSC01	28	3250	116	4000	80	Yes	SylSmart Standalone	<18
0044925	RANA Linear S 3KLM NW LOUV+PRI SSA02	28	3050	108	4000	80	Yes	SylSmart Connected	<19
0044924	RANA Linear S 3KLM NW LOUV+PRI D SSA02	28	3050	108	4000	80	Yes	DALI + SylSmart Connected	<19
0051270	RANA Linear S 3KLM NW LOUV+PRI EM	31	3160	101	4000	80	No	-	<19
0051271	RANA Linear S 3KLM NW LOUV+PRI D EM	31	3160	101	4000	80	Yes	DALI	<19
0051272	RANA Linear S 3KLM NW LOUV+PRI 1-10 EM	31	3160	101	4000	80	Yes	1-10V	<19
Tunable White									
0051345	RANA Linear S 3KLM TW LOUV+PRI SSC01	31	2900	94	3000-6000	80	Yes	SylSmart Standalone	<17

Legend: S = Surface or Suspended; KLM = kilo Lumen; NW = Neutral White (4000K); WW = Warm White (3000K); TW = Tunable White (3000-6000K), MPO = Micro Prismatic Optic; LOUV+PRI = Louvre + MicroPrismatic Optic; OPAL = Opal Diffuser; D = DALI; 1-10 = Analogue 1-10V; SSA = SylSmart Connected; SSC = SylSmart Standalone; EM = Emergency

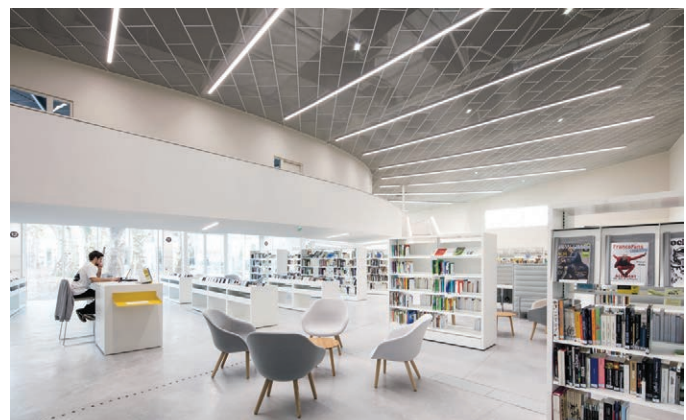
Additional images



Photometric Data



Louvre + Prismatic Optic
4000K

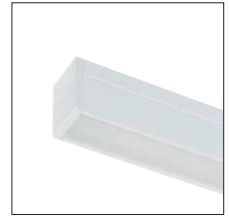


RANA Linear Surface and Suspended - Opal Diffuser



Features

- Pure line of light with Opal diffuser
- Surface mount as standard
- Accessories available for suspension and continuous run installations
- 87mm square profile



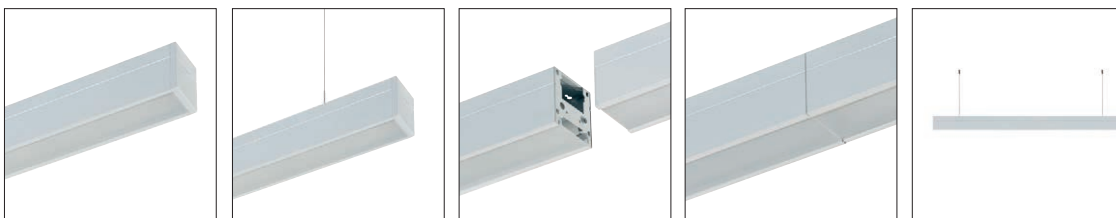
Opal

Product information

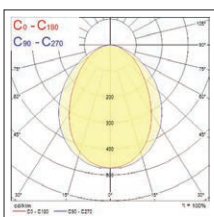
Code	Description	Fixture Power (W)	Luminous Flux (lm)	Efficacy (lm/W)	Colour Temperature (K)	CRI	Dimmable	Control Technology	UGR
RANA Linear - Opal Diffuser									
3000K									
0051278	RANA Linear S 3KLM WW OPAL	31	3220	103	3000	80	No	-	<23
0051279	RANA Linear S 3KLM WW OPAL D	31	3220	103	3000	80	Yes	DALI	<23
0051280	RANA Linear S 3KLM WW OPAL 1-10	31	3220	103	3000	80	Yes	1-10V	<23
0044931	RANA Linear S 3KLM WW OPAL SSA02	32	3150	98	3000	80	Yes	SylSmart Connected	<23
0044930	RANA Linear S 3KLM WW OPAL D SSA02	32	3150	98	3000	80	Yes	DALI + SylSmart Connected	<23
4000K									
0051275	RANA Linear S 3KLM NW OPAL	31	3270	105	4000	80	No	-	<23
0051276	RANA Linear S 3KLM NW OPAL D	31	3270	105	4000	80	Yes	DALI	<23
0051277	RANA Linear S 3KLM NW OPAL 1-10	31	3270	105	4000	80	Yes	1-10V	<23
0051343	RANA Linear S 3KLM NW OPAL SSC01	32	3270	102	4000	80	Yes	SylSmart Standalone	<23
0044933	RANA Linear S 3KLM NW OPAL SSA02	32	3300	103	4000	80	Yes	SylSmart Connected	<23
0044932	RANA Linear S 3KLM NW OPAL D SSA02	32	3300	103	4000	80	Yes	DALI + SylSmart Connected	<23
0051283	RANA Linear S 3KLM NW OPAL EM	35	3210	91	4000	80	No	-	<23
0051284	RANA Linear S 3KLM NW OPAL D EM	35	3210	91	4000	80	Yes	DALI	<23
0051285	RANA Linear S 3KLM NW OPAL 1-10 EM	35	3210	91	4000	80	Yes	1-10V	<23

Legend: S = Surface or Suspended; KLM = kilo Lumen; NW = Neutral White (4000K); WW = Warm White (3000K); TW = Tunable White (3000-6000K), MPO = Micro Prismatic Optic; LOUV+PRI = Louvre + MicroPrismatic Optic; OPAL = Opal Diffuser; D = DALI; 1-10 = Analogue 1-10V; SSA = SylSmart Connected; SSC = SylSmart Standalone; EM = Emergency

Additional images



Photometric Data



Opal 4000K



RANA Linear Accessories



Code	Description	Control
Accessories		
Recessed		
0051301	RANA Linear R ACC Bracket 1-20mm x 1	1 pair of ceiling brackets for 1 luminaire. Ceiling thickness from 1mm to 20mm
0051302	RANA Linear R ACC Bracket 1-20mm x 5	5 pairs of ceiling brackets for 5 luminaires. Ceiling thickness from 1mm to 20mm
0051303	RANA Linear R ACC v 21-40mm x 1	1 pair of ceiling brackets for 1 luminaire. Ceiling thickness from 21mm to 45mm
0051304	RANA Linear R ACC v 21-40mm x 5	5 pairs of ceiling brackets for 5 luminaires. Ceiling thickness from 21mm to 45mm
0051296	RANA Linear ACC TW Power 3 x 1.5 1350mm	1350mm Trough Wiring Wires 3 x 1,5mm ² + Auto-adhesive Cable Guide Clips
0051297	RANA Linear ACC TW Power 5 x 1.5 1350mm	1350mm Trough Wiring Wires 5 x 1,5mm ² + Auto-adhesive Cable Guide Clips
Surface & Suspended		
0051290	RANA Linear S ACC SUSP + Power 3 x 1.5mm W	2 x Suspension Metallic Cables (I shaped) 1,5m + 2 x Balance Adjustment Plates + 2m White Power Cable 3 x 1,5mm ² + Ceiling Rose + Cable Clips
0051291	RANA Linear S ACC SUSP + Power 3 x 1.5mm T	2 x Suspension Metallic Cables (I shaped) 1,5m + 2 x Balance Adjustment Plates + 2m Transparent Power Cable 3 x 1,5mm ² + Ceiling Rose + Cable Clips
0051292	RANA Linear S ACC SUSP + Power 5 x 1.5mm W	2 x Suspension Metallic Cables (I shaped) 1,5m + 2 x Balance Adjustment Plates + 2m White Power Cable 5 x 1,5mm ² + Ceiling Rose + Cable Clips
0051293	RANA Linear S ACC SUSP + Power 5 x 1.5mm T	2 x Suspension Metallic Cables (I shaped) 1,5m + 2 x Balance Adjustment Plates + 2m Transparent Power Cable 5 x 1,5mm ² + Ceiling Rose + Cable Clips
0051294	RANA Linear S ACC In-Line Suspension Y Kit	1 x Suspension Metallic Cables (Y shaped) 1,5m + 2 x Balance Adjustment Plates + 2 x Binding Screws + 2 x Junction Gaskets
0051295	RANA Linear S ACC In-Line Surface Kit	2 x Binding Screws + 2 x Junction Gaskets
0051315	RANA Linear S ACC 2 x Suspension Cables	2 x Suspension Metallic Cables (I shaped) 1,5m + 2 x Balance Adjustment Plates + Cable Clips for 1 single luminaire
0051316	RANA Linear S ACC In-Line Susp Y Kit + TW 3	1 x Suspension Metallic Cables (Y shaped) 1,5m + 2 x Balance Adjust. Plates + 2 x Binding Screws + 2 x Junction Gaskets + 1350mm Trough Wiring Wires 3 x 1,5mm ² + Adhesive Cable Guide Clips
0051317	RANA Linear S ACC In-Line Susp Y Kit + TW 5	1 x Suspension Metallic Cables (Y shaped) 1,5m + 2 x Balance Adjust. Plates + 2 x Binding Screws + 2 x Junction Gaskets + 1350mm Trough Wiring Wires 5 x 1,5mm ² + Adhesive Cable Guide Clips
0051318	RANA Linear S ACC In-Line Surf Kit + TW 3	2 x Binding Screws + 2 x Junction Gaskets + 1350mm Trough Wiring Wires 3 x 1,5mm ² + Auto-adhesive Cable Guide Clips
0051319	RANA Linear S ACC In-Line Surf Kit + TW 5	2 x Binding Screws + 2 x Junction Gaskets + 1350mm Trough Wiring Wires 5 x 1,5mm ² + Auto-adhesive Cable Guide Clips
Recessed + Surface & Suspended		
0051288	RANA Linear ACC End Row Masking Plate	Metallic plate to mask the band of light at the end of a row up to 9 x luminaires in continuous run.
0051298	RANA Linear ACC Diffuser PC 1700mm MPO	Micro Prismatic Polycarbonate diffuser of length 1700mm, to be cut to length, for more than 9 luminaires in continuous run
0051300	RANA Linear ACC Diffuser PC 1700mm OPAL	Opal Polycarbonate diffuser of length 1700mm, to be cut to length, for more than 9 luminaires in continuous run

Legend: S = Surface & Suspended; R = Recessed; ACC = Accessory; SUSP = Suspension; W = White cable; T = Transparent; TW = Through Wiring; 1-15MM = ceiling thickness of 1mm to 20mm; 1350MM = 1350mm



RANA Linear Ceiling Recessed Installation



Ceiling brackets installation

For ceiling thickness from 1mm to 20mm:

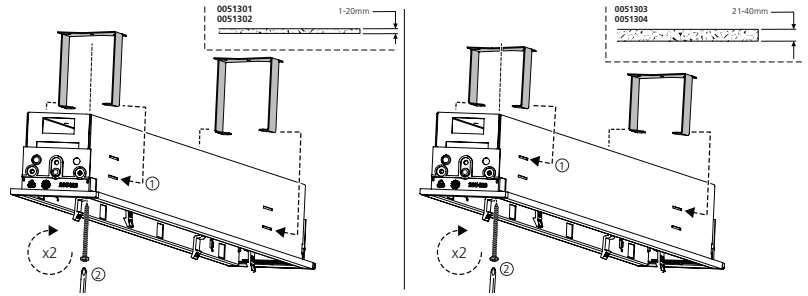
0051301 RANA LIN R ACC Bracket 1-20mm x 1 (for 1 luminaire)

0051302 RANA LIN R ACC Bracket 1-20mm x 5 (for 5 luminaires)

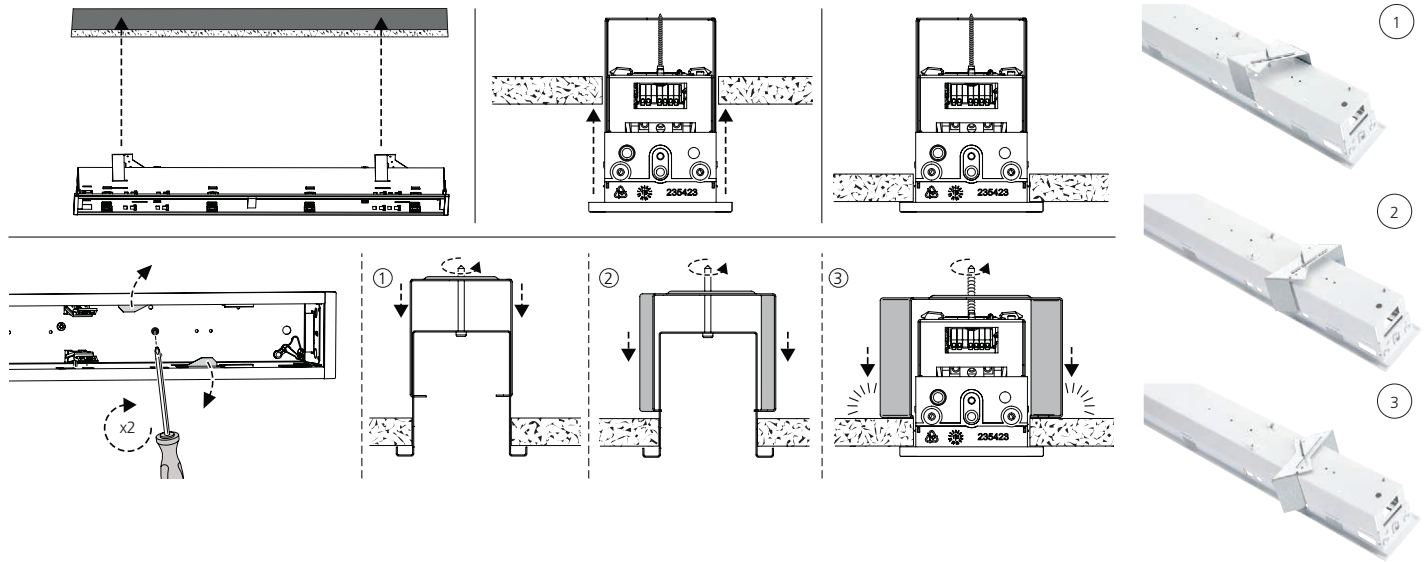
For ceiling thickness from 21mm to 45mm:

0051303 RANA LIN R ACC Bracket 21-40mm x 1 (for 1 luminaire)

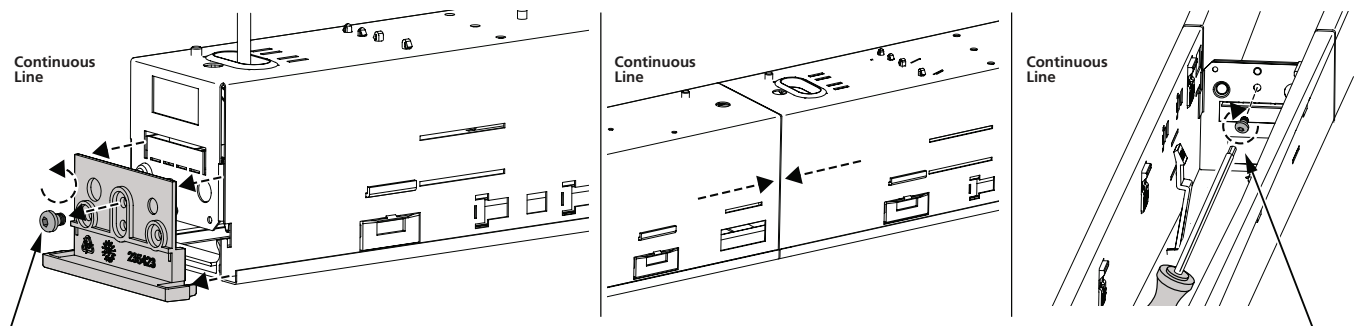
0051304 RANA LIN R ACC Bracket 21-40mm x 5 (for 5 luminaires)



Ceiling installation



Continuous run installation of (x) luminaires



For a continuous run of x ceiling recessed luminaires, please use:
(x) pairs of ceiling brackets for ceiling thickness 1-20mm or 21-40mm:

0051301 RANA LIN R ACC Bracket 1-20mm x 1

0051303 RANA LIN R ACC Bracket 21-40mm x 1

or (x/5) packs of 5 pairs of Bracket :

0051302 RANA LIN R ACC Bracket 1-20mm x 5

0051304 RANA LIN R ACC Bracket 21-40mm x 5

And (x-1) of the Trough Wiring kit:

0051296 RANA LINEAR ACC TW Power 3 x 1.5 1350mm

or

0051297 RANA LINEAR ACC TW Power 5 x 1.5 1350mm

(3 wires for non-dimmable luminaires, 5 wires for dimmable luminaires)

RANA Linear Surface & Suspended Installation

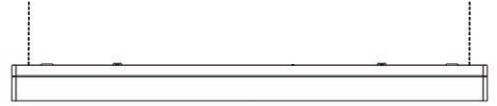
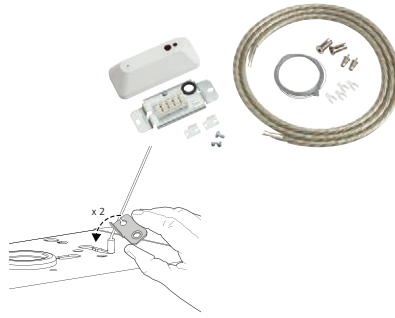
Suspension kits for 1 luminaire

For each individual suspended luminaire, please use 1 of the 4 following kits:

- 0051290** RANA LIN S ACC SUSP + Power 3 x 1.5MM W
- 0051291** RANA LIN S ACC SUSP + Power 3 x 1.5MM T
- 0051292** RANA LIN S ACC SUSP + Power 5 x 1.5MM W
- 0051293** RANA LIN S ACC SUSP + Power 5 x 1.5MM T

Each kit contains:

- 2 x metallic Suspension Cables 1,5m (I shaped)
- 2 x Balance Adjustment Plates
- 2 x Ceiling Attachments
- 2m Power Cable 3 or 5 x 1,5mm², white or transparent
- 1 x Ceiling Rose with connector plate included
- 4 x Cable Clips



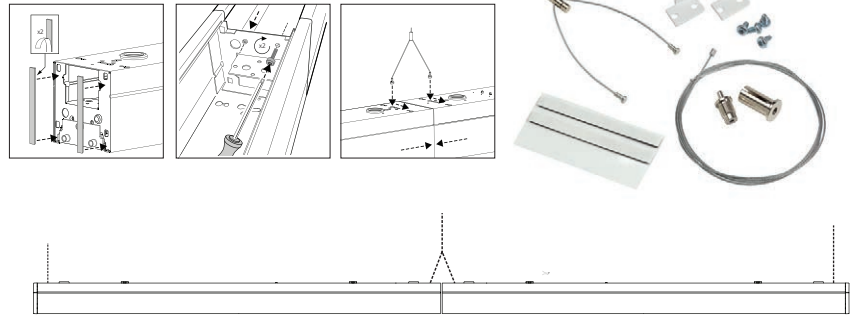
Suspension kits for (x) luminaires

For a continuous run of (x) suspended luminaires, please use 1 of the 4 following kits:

- 0051290** RANA LIN S ACC SUSP + Power 3 x 1.5mm W
- 0051291** RANA LIN S ACC SUSP + Power 3 x 1.5mm T
- 0051292** RANA LIN S ACC SUSP + Power 5 x 1.5mm W
- 0051293** RANA LIN S ACC SUSP + Power 5 x 1.5mm T

Each containing:

- 2 x metallic Suspension Cables 1,5m (I shaped)
- 2 x Balance Adjustment Plates
- 2 x Ceiling Attachments
- 2m Power Cable 3 or 5 x 1,5mm², white or transparent
- 1 x Ceiling Rose with connector plate included
- 4 x Cable Clips



and (x-1) of:

- 0051316** RANA LIN S ACC In-Line SUSP Y Kit + TW 3
- or
- 0051317** RANA LIN S ACC In-Line SUSP Y Kit + TW 5

Each containing:

- 1 x metallic Suspension Cable 1,5m (Y shaped)
- 2 x Balance Adjustment Plates
- 1 x Ceiling Attachment
- 2 x Binding Screws
- 2 x Junction Gaskets
- 1350mm Trough Wiring wires (3 or 5 x 1,5mm²)
- Adhesive Cable Guide Clips

Surface kits for (x) luminaires

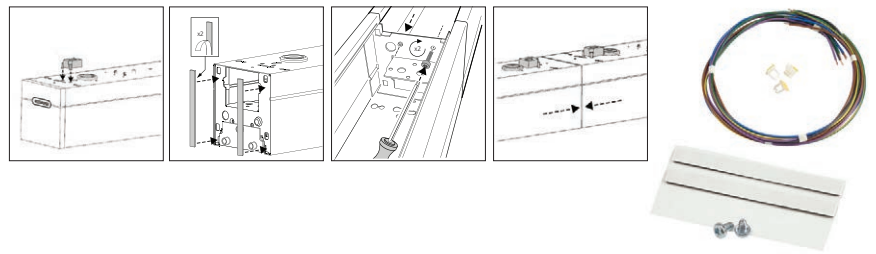
For a continuous run of (x) surface mounted luminaires, please use:

(x-1) of:

- 0051318** RANA LIN S ACC In-Line SURF Kit + TW 3
- or
- 0051319** RANA LIN S ACC In-Line SURF Kit + TW 5

Each containing:

- 2 x Binding Screws
- 2 x Junction Gaskets
- 1350mm Trough Wiring wires (3 or 5 x 1,5mm²)
- Auto-adhesive Cable Guide Clips



RANA Linear Surface, Suspended or Recessed easy installation

Product opening and light engine tray removal in 5 steps



RANA Linear Installation

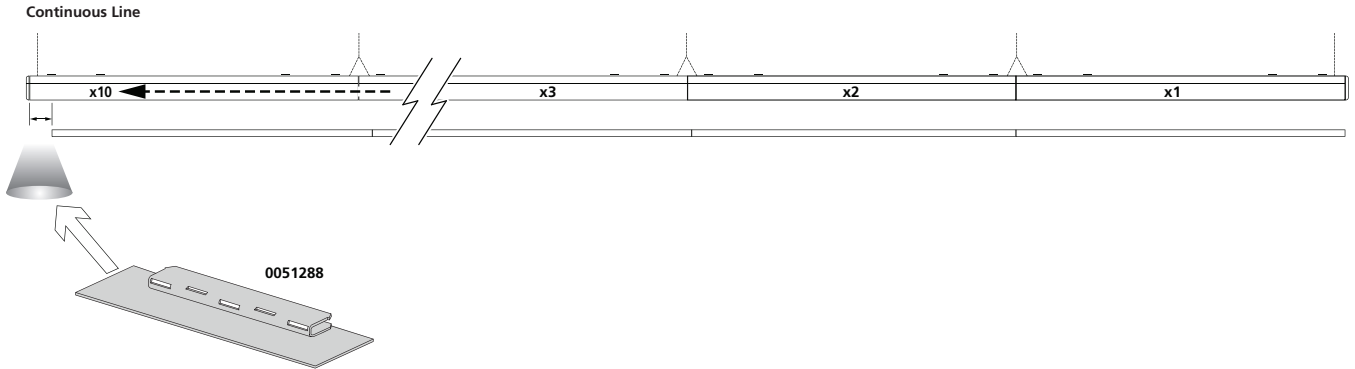


Continuous run installations with MPO & Opal diffusers

Due to mandatory mechanical tolerances between the diffuser and the body of RANA Linear, the length of the diffuser is slightly shorter than the length of the body.

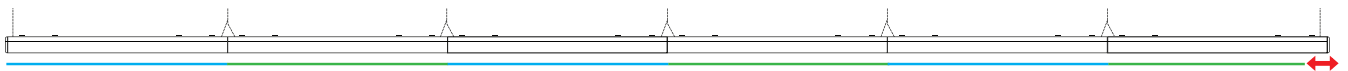
In case of continuous line of light installations, to obtain the expected “seamless line of light” effect, all diffusers have to be in contact with each other. This adds the body-diffuser length difference as many times as the total quantity of luminaires.

It results in a **band of light without diffuser at the end of the line of luminaires.**



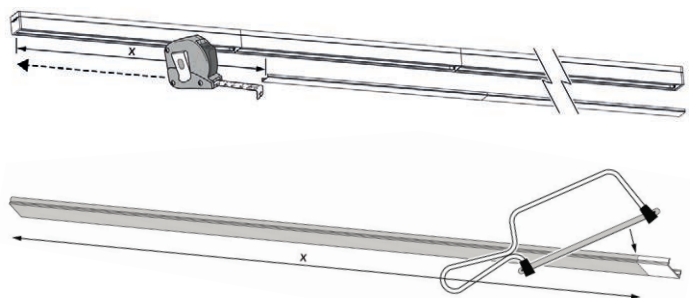
To remove this band of bare light at the end of a row of 2 to 10 luminaires, just clip the metallic Light Masking Plate 0051288 on the last diffuser of the row.

(2 x Light Masking Plates 0051288 can also be used at the extremities of a longer row of maximum 20 luminaires).



To remove the band of bare light, the installer can also replace the last luminaire’s diffuser (of length approx. 1130mm) by a longer one to be cut to the exact length. This longer polycarbonate diffuser, of length 1700mm, is available as an accessory in both diffuser versions:

Code	Description
Accessories	
0051298	RANA LINEAR ACC DIFFUSER PC 1700MM MPO
0051300	RANA LINEAR ACC DIFFUSER PC 1700MM OPAL



sylvania-lighting.com

A Feilo Sylvania Company

Although every effort has been made to ensure accuracy in the compilation of the technical detail within this publication, specifications and performance data are constantly changing. Current details should therefore be checked with Feilo Sylvania International Group Kft. Copyright Feilo Sylvania International Group Kft. February 2022

T: F:
Email: