

**Concord**  
by **SYLVANIA**



# Lighting for office comfort



## Concord Optix Surface and Suspended

Concord Optix is a flagship luminaire family of our office and education portfolio. Combining high performance glare-controlled optics with state of the art highly efficient LEDs and wide variety of control options, Concord Optix offers the perfect lighting solution for office, education and seminar room environments.

The modular design of the optical unit allows for customisation with variants to fit in different ceiling types, match colours and comply with different configurations.

The range offers the possibility to mix and match different versions in a single lighting scheme. The optics of the luminaires are available in two finishing colours to match the aesthetic needs of any application.

In an effort to appreciate human health and well being, and as a result of the continuous evolution of the range, Concord Optix now brings you a new era in office lighting by recreating sunlight. Combining the innovation of Sylvania LumiNature with SylSmart technology Concord Optix gives you one of the most natural, artificial lights in human centric lighting. Keeping in mind that modern offices should be connected to both broader business drivers and the people within it, Concord Optix continues to be available with our SylSmart Connected and SylSmart Standalone control options.

The beauty of **light**

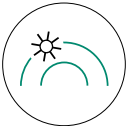
# Human Centric Lighting

## LumiNature. Natural light recreated.

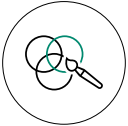


Our versatile Concord Optix range has members complying with the latest Well Building Standard, offering real Human Centric Lighting options with either Tunable White (2800-6200K) or Neutral White (4000K) colour temperature.

### Sylvania LumiNature marks a new era in human centric lighting: it recreates sunlight.



- **Its complete spectral curve with eliminated blue peaks** and



- **truest colours** make it one of the most natural artificial lights.



**LumiNature** gives you something that even the sun cannot:

- **dynamic lighting control.**

The SylSmart Standalone and Connected control options offer you full optimisation and tunability.

**Revolutionary, human-tailored light. Designed for better living.**

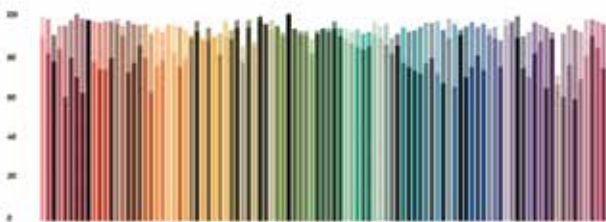
- Zero blue peak even in cold colour temperatures –

low glare (UGR<16) and low flicker (<5%),

- Rich and energizing light with beneficial melanopic ratio (>0.8 during daytime with cool light and <0.5 during the evening with warm light),
- Excellent colour rendering perfect for numerous applications – CRI97 including the truest reds and no ultra-violet or infra-red,
- Dynamic light 100% adapted to circadian rhythm – SylSmart enabled system with dimmable, auto-adjusting tunable white light.

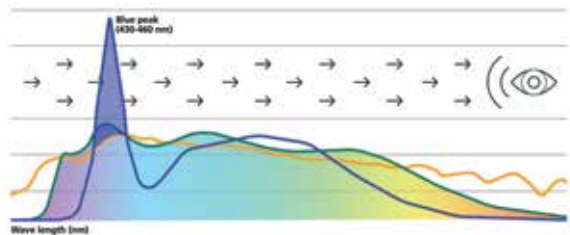
Concord Optix Lumi HCL Tunable White and Lumi 4000K fixtures are the best-in-class products offering high efficiency and customisation through the modular product design and two HCL options depending on office environment and budget.

### Colour evaluation samples 1-99 LumiNature vs Standard LED



Lighter colours: LumiNature  
Darker colours: Standard LED

### Relative intensity



# Concord Optix Surface & Suspended



## Features

- Surface and Suspended mounted versions of the Optix family
- Efficacy is up-to 160 lm/W
- Continuous line mounting and through wiring options available with accessories
- Suspended versions available also with Direct / Indirect distribution
- Glare control optics available in two finishes, ALU (UGR<16) and WHITE (UGR<19)
- Luminance at 65°<200 cd/m2 with ALU optic
- Low LED flicker <5%.
- CRI and CCT options:  
(Ra)>80: 3000K, 4000K, TW (3000-6000K)  
(Ra)>90: 4000K  
Ra)>95 LUMI: 4000K and TW (2800-6200K)
- LED Colour consistency between luminaries <3 SDCM
- DALI (Switch-dim) dimmable, SylSmart Connected and SylSmart Standalone enabled
- 3 hours maintained Emergency versions.
- Lifespan (Ra)>80 or (Ra)>90:  
60,000hrs L90B10  
120,000hrs L80B20  
120,000hrs L70B50
- Lifespan (Ra)>95 LUMI:  
>60,000hrs L80B20  
100,000hrs L70B50

Code	Description	Optic Finish	Fixture Power (W)	Luminous Flux (lm)	Efficacy (lm/W)	Colour Temp (K)	CRI	Dimmable	Control Technology	UGR
<b>Optix 1200 x 200mm module - Medium Output Direct</b>										
<b>3000K - CRI80</b>										
2023700	Optix S 1200x200 2 LINE 3000K ALU	Aluminium	26	3400	131	3000	>80	-	-	<16
2023702	Optix S 1200x200 2 LINE 3000K WHT	White	23	3400	148	3000	>80	-	-	<19
2023701	Optix S 1200x200 2 LINE 3000K ALU DALI	Aluminium	26	3400	131	3000	>80	Yes	DALI	<16
2023703	Optix S 1200x200 2 LINE 3000K WHT DALI	White	23	3400	148	3000	>80	Yes	DALI	<19
<b>4000K - CRI80</b>										
2023704	Optix S 1200x200 2 LINE 4000K ALU	Aluminium	26	3600	138	4000	>80	-	-	<16
2023714	Optix S 1200x200 2 LINE 4000K WHT	White	23	3600	157	4000	>80	-	-	<19
2023705	Optix S 1200x200 2 LINE 4000K ALU DALI	Aluminium	26	3600	138	4000	>80	Yes	DALI	<16
2023715	Optix S 1200x200 2 LINE 4000K WHT DALI	White	23	3600	157	4000	>80	Yes	DALI	<19
2023709	Optix S 1200x200 2 LINE 4000K ALU SSC	Aluminium	27	3600	133	4000	>80	Yes	SylSmart Standalone	<16
2023719	Optix S 1200x200 2 LINE 4000K WHT SSC	White	24	3600	150	4000	>80	Yes	SylSmart Standalone	<19
2023708	Optix S 1200x200 2 LINE 4000K ALU SSA02	Aluminium	27	3600	133	4000	>80	Yes	SylSmart Connected	<16
2023718	Optix S 1200x200 2 LINE 4000K WHT SSA02	White	24	3600	150	4000	>80	Yes	SylSmart Connected	<19
2023707	Optix S 1200x200 2 LINE 4000K ALU EM	Aluminium	29	3600	124	4000	>80	-	-	<16
2023717	Optix S 1200x200 2 LINE 4000K WHT EM	White	26	3600	138	4000	>80	-	-	<19
2023706	Optix S 1200x200 2 LINE 4000K ALU DALI EM	Aluminium	29	3600	124	4000	>80	Yes	DALI	<16
2023716	Optix S 1200x200 2 LINE 4000K WHT DALI EM	White	26	3600	138	4000	>80	Yes	DALI	<19
<b>4000K - CRI90</b>										
2023710	Optix S 1200x200 2 LINE 4000K C9 ALU DALI	Aluminium	29	3700	128	4000	>90	Yes	DALI	<16
2023712	Optix S 1200x200 2 LINE 4000K C9 WHT DALI	White	27	3700	137	4000	>90	Yes	DALI	<19
2023711	Optix S 1200x200 2 LINE 4000K C9 ALU DALI EM	Aluminium	32	3700	116	4000	>90	Yes	DALI	<16
2023713	Optix S 1200x200 2 LINE 4000K C9 WHT DALI EM	White	30	3700	123	4000	>90	Yes	DALI	<19
<b>Tunable White - CRI80</b>										
2023764	Optix S 1200x200 2 LINE TW ALU DALI	Aluminium	30	3200	107	3000-6000	>80	Yes	DALI DT8	<16
2023768	Optix S 1200x200 2 LINE TW WHT DALI	White	30	3600	120	3000-6000	>80	Yes	DALI DT8	<19
2023766	Optix S 1200x200 2 LINE TW ALU SSC	Aluminium	31	3200	103	3000-6000	>80	Yes	SylSmart Standalone	<16
2023770	Optix S 1200x200 2 LINE TW WHT SSC	White	31	3600	116	3000-6000	>80	Yes	SylSmart Standalone	<19
2023765	Optix S 1200x200 2 LINE TW ALU DALI EM	Aluminium	33	3200	97	3000-6000	>80	Yes	DALI DT8	<16
2023769	Optix S 1200x200 2 LINE TW WHT DALI EM	White	33	3600	109	3000-6000	>80	Yes	DALI DT8	<19
2023767	Optix S 1200x200 2 LINE TW ALU SSC EM	Aluminium	34	3200	94	3000-6000	>80	Yes	SylSmart Standalone	<16
2023771	Optix S 1200x200 2 LINE TW WHT SSC EM	White	34	3600	106	3000-6000	>80	Yes	SylSmart Standalone	<19
<b>4000K - CRI98 (LUMI HCL)</b>										
2023827	Optix S 1200x200 2 LINE LUMI 4K ALU	Aluminium	36	3810	106	4000	>98	-	-	<16
2023828	Optix S 1200x200 2 LINE LUMI 4K ALU DALI	Aluminium	36	3810	106	4000	>98	Yes	DALI	<16
2023829	Optix S 1200x200 2 LINE LUMI 4K ALU SSC	Aluminium	37	3810	103	4000	>98	Yes	SylSmart Standalone	<16
2023862	Optix S 1200x200 2 LINE LUMI 4K ALU SSA	Aluminium	37	3810	103	4000	>98	Yes	SylSmart Connected	<16
<b>Tunable White - CRI95 (LUMI HCL)</b>										
2023830	Optix S 1200x200 2 LINE LUMI HCL TW ALU DALI	Aluminium	36	3500	97	2800-6200	>95	Yes	DALI DT8	<16
2023831	Optix S 1200x200 2 LINE LUMI HCL TW ALU SSC	Aluminium	37	3500	95	2800-6200	>95	Yes	SylSmart Standalone	<16

# Concord Optix Suspended Direct / Indirect



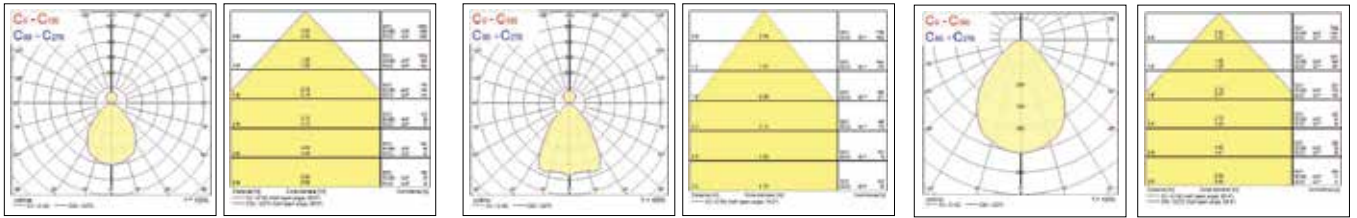
Code	Description	Optic Finish	Fixture Power (W)	Luminous Flux (lm)	Efficacy (lm/W)	Colour Temp (K)	CRI	Dimmable	Control Technology	UGR
<b>Optix 1200 x 200mm module - Medium Output Direct / Indirect</b>										
<b>3000K - CRI80</b>										
2023720	Optix S 1200x200 2 LINE D/I 3000K ALU	Aluminium	29	4000	138	3000	>80	-	-	<16
2023722	Optix S 1200x200 2 LINE D/I 3000K WHT	White	29	4000	138	3000	>80	-	-	<19
2023721	Optix S 1200x200 2 LINE D/I 3000K ALU DALI	Aluminium	29	4000	138	3000	>80	Yes	DALI	<16
2023723	Optix S 1200x200 2 LINE D/I 3000K WHT DALI	White	29	4000	138	3000	>80	Yes	DALI	<19
<b>4000K - CRI80</b>										
2023724	Optix S 1200x200 2 LINE D/I 4000K ALU	Aluminium	29	4100	141	4000	>80	-	-	<16
2023734	Optix S 1200x200 2 LINE D/I 4000K WHT	White	25	4100	164	4000	>80	-	-	<19
2023725	Optix S 1200x200 2 LINE D/I 4000K ALU DALI	Aluminium	29	4100	141	4000	>80	Yes	DALI	<16
2023735	Optix S 1200x200 2 LINE D/I 4000K WHT DALI	White	25	4100	164	4000	>80	Yes	DALI	<19
2023729	Optix S 1200x200 2 LINE D/I 4000K ALU SSC	Aluminium	30	4100	137	4000	>80	Yes	SylSmart Standalone	<16
2023739	Optix S 1200x200 2 LINE D/I 4000K WHT SSC	White	26	4100	158	4000	>80	Yes	SylSmart Standalone	<19
2023728	Optix S 1200x200 2 LINE D/I 4000K ALU SSA02	Aluminium	30	4100	137	4000	>80	Yes	SylSmart Connected	<16
2023738	Optix S 1200x200 2 LINE D/I 4000K WHT SSA02	White	26	4100	158	4000	>80	Yes	SylSmart Connected	<19
2023727	Optix S 1200x200 2 LINE D/I 4000K ALU EM	Aluminium	32	4100	128	4000	>80	-	-	<16
2023737	Optix S 1200x200 2 LINE D/I 4000K WHT EM	White	28	4100	146	4000	>80	-	-	<19
2023726	Optix S 1200x200 2 LINE D/I 4000K ALU DALI EM	Aluminium	32	4100	128	4000	>80	Yes	DALI	<16
2023736	Optix S 1200x200 2 LINE D/I 4000K WHT DALI EM	White	28	4100	146	4000	>80	Yes	DALI	<19
<b>4000K - CRI90</b>										
2023730	Optix S 1200x200 2 LINE D/I 4000K C9 ALU DALI	Aluminium	32	4100	128	4000	>90	Yes	DALI	<16
2023732	Optix S 1200x200 2 LINE D/I 4000K C9 WHT DALI	White	29	4100	141	4000	>90	Yes	DALI	<19
2023731	Optix S 1200x200 2 LINE D/I 4000K C9 ALU DALI EM	Aluminium	35	4100	117	4000	>90	Yes	DALI	<16
2023733	Optix S 1200x200 2 LINE D/I 4000K C9 WHT DALI EM	White	32	4100	128	4000	>90	Yes	DALI	<19
<b>Tunable White - CRI80</b>										
2023756	Optix S 1200x200 2 LINE D/I TW ALU DALI	Aluminium	31	3700	119	3000-6000	>80	Yes	DALI DT8	<16
2023760	Optix S 1200x200 2 LINE D/I TW WHT DALI	White	31	3900	126	3000-6000	>80	Yes	DALI DT8	<19
2023758	Optix S 1200x200 2 LINE D/I TW ALU SSC	Aluminium	32	3700	116	3000-6000	>80	Yes	SylSmart Standalone	<16
2023762	Optix S 1200x200 2 LINE D/I TW WHT SSC	White	32	3900	122	3000-6000	>80	Yes	SylSmart Standalone	<19
2023757	Optix S 1200x200 2 LINE D/I TW ALU DALI EM	Aluminium	34	3700	109	3000-6000	>80	Yes	DALI DT8	<16
2023761	Optix S 1200x200 2 LINE D/I TW WHT DALI EM	White	34	3900	115	3000-6000	>80	Yes	DALI DT8	<19
2023759	Optix S 1200x200 2 LINE D/I TW ALU SSC EM	Aluminium	35	3700	106	3000-6000	>80	Yes	SylSmart Standalone	<16
2023763	Optix S 1200x200 2 LINE D/I TW WHT SSC EM	White	35	3900	111	3000-6000	>80	Yes	SylSmart Standalone	<19
<b>Optix 1200 x 200mm module - High Output Direct / Indirect</b>										
<b>3000K - CRI80</b>										
2023740	Optix S 1200x200 2 LINE D/I HO 3000K ALU	Aluminium	36	5100	142	3000	>80	-	-	<16
2023742	Optix S 1200x200 2 LINE D/I HO 3000K WHT	White	33	5100	155	3000	>80	-	-	<19
2023741	Optix S 1200x200 2 LINE D/I HO 3000K ALU DALI	Aluminium	36	5100	142	3000	>80	Yes	DALI	<16
2023743	Optix S 1200x200 2 LINE D/I HO 3000K WHT DALI	White	33	5100	155	3000	>80	Yes	DALI	<19
<b>4000K - CRI80</b>										
2023744	Optix S 1200x200 2 LINE D/I HO 4000K ALU	Aluminium	36	5600	156	4000	>80	-	-	<16
2023750	Optix S 1200x200 2 LINE D/I HO 4000K WHT	White	35	5600	160	4000	>80	-	-	<19
2023745	Optix S 1200x200 2 LINE D/I HO 4000K ALU DALI	Aluminium	36	5600	156	4000	>80	Yes	DALI	<16
2023751	Optix S 1200x200 2 LINE D/I HO 4000K WHT DALI	White	35	5600	160	4000	>80	Yes	DALI	<19
2023749	Optix S 1200x200 2 LINE D/I HO 4000K ALU SSC	Aluminium	37	5600	151	4000	>80	Yes	SylSmart Standalone	<16
2023755	Optix S 1200x200 2 LINE D/I HO 4000K WHT SSC	White	36	5600	156	4000	>80	Yes	SylSmart Standalone	<19
2023748	Optix S 1200x200 2 LINE D/I HO 4000K ALU SSA02	Aluminium	37	5600	151	4000	>80	Yes	SylSmart Connected	<16
2023754	Optix S 1200x200 2 LINE D/I HO 4000K WHT SSA02	White	36	5600	156	4000	>80	Yes	SylSmart Connected	<19
2023747	Optix S 1200x200 2 LINE D/I HO 4000K ALU EM	Aluminium	39	5600	144	4000	>80	-	-	<16
2023753	Optix S 1200x200 2 LINE D/I HO 4000K WHT EM	White	38	5600	147	4000	>80	-	-	<19
2023746	Optix S 1200x200 2 LINE D/I HO 4000K ALU DALI EM	Aluminium	39	5600	144	4000	>80	Yes	DALI	<16
2023752	Optix S 1200x200 2 LINE D/I HO 4000K WHT DALI EM	White	38	5600	147	4000	>80	Yes	DALI	<19

# Concord Optix Suspended Direct / Indirect



Code	Description	Optic Finish	Fixture Power (W)	Luminous Flux (lm)	Efficacy (lm/W)	Colour Temp (K)	CRI	Dimmable	Control Technology	UGR
<b>Optix 1500 x 200mm module - High Output Direct / Indirect</b>										
<b>4000K - CRI80</b>										
2023772	Optix S 1500x200 2 LINE D/I HO 4000K ALU DALI	Aluminium	45	7,000	156	4,000	>80	Yes	DALI	<16
2023777	Optix S 1500x200 2 LINE D/I HO 4000K WHT DALI	White	44	7,000	159	4,000	>80	Yes	DALI	<19
2023776	Optix S 1500x200 2 LINE D/I HO 4000K ALU SSC	Aluminium	46	7,000	152	4,000	>80	Yes	SylSmart Standalone	<16
2023781	Optix S 1500x200 2 LINE D/I HO 4000K WHT SSC	White	45	7,000	156	4,000	>80	Yes	SylSmart Standalone	<19
2023775	Optix S 1500x200 2 LINE D/I HO 4000K ALU SSA02	Aluminium	46	7,000	152	4,000	>80	Yes	SylSmart Connected	<16
2023780	Optix S 1500x200 2 LINE D/I HO 4000K WHT SSA02	White	45	7,000	156	4,000	>80	Yes	SylSmart Connected	<19
2023774	Optix S 1500x200 2 LINE D/I HO 4000K ALU EM	Aluminium	48	7,000	146	4,000	>80	-	-	<16
2023779	Optix S 1500x200 2 LINE D/I HO 4000K WHT EM	White	47	7,000	149	4,000	>80	-	-	<19
2023773	Optix S 1500x200 2 LINE D/I HO 4000K ALU DALI EM	Aluminium	48	7,000	146	4,000	>80	Yes	DALI	<16
2023778	Optix S 1500x200 2 LINE D/I HO 4000K WHT DALI EM	White	47	7,000	149	4,000	>80	Yes	DALI	<19

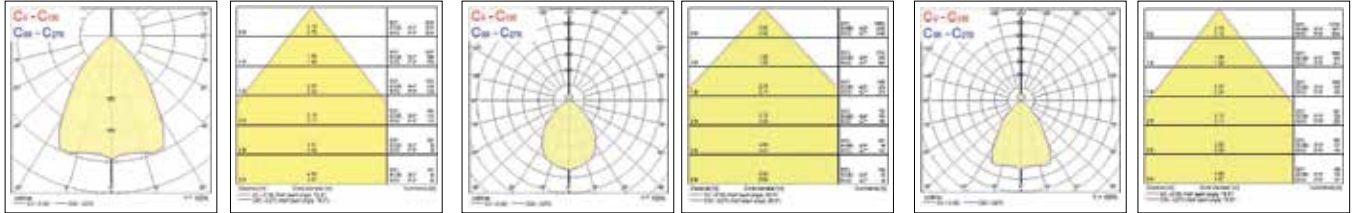
## Photometric Data



OPTIX S 1200 2L DI 4K WHT

OPTIX S 1200 2L DI 4K ALU

OPTIX S 1200 2L 4K WHT

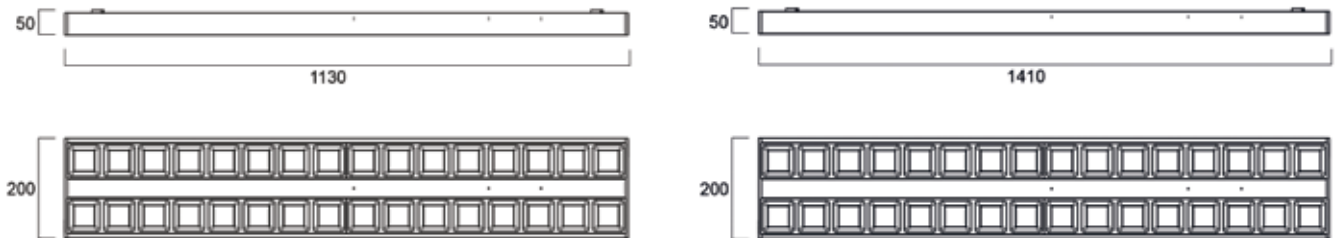


OPTIX S 1200 2L 4K ALU

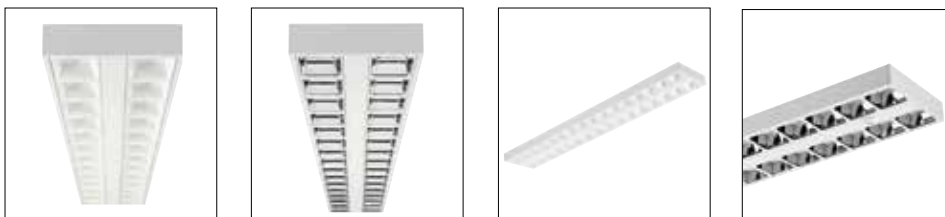
OPTIX S 1500 2L DI 4K WHT

OPTIX S 1500 2L DI 4K ALU

## Dimensions (mm)



## Additional Images



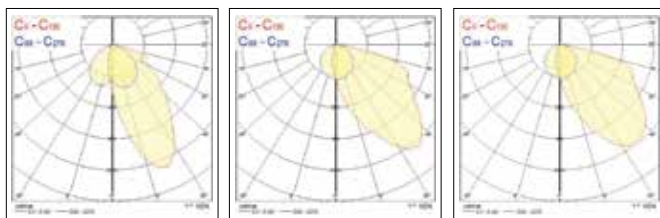
# Concord Optix Surface & Suspended Asymmetric

## Features

- Combining design of Optix body with aluminium reflector for perfect asymmetric light distribution
- Up to 3480lm (1200mm) and 4250lm (1500mm) output
- Efficacy up-to 116 lm/W
- Low LED flicker <5%
- LED Colour consistency between luminaries <3 SDCM
- Colour Rendering Index (CRI) >80 (3000K, 4000K)
- Colour: White (RAL9016) as standard, other colours available on request
- DALI (Switch-dim) dimmable and SylSmart Standalone Office control option
- Lifespan: 58,000hrs L90B10  
100,000hrs L80B20  
100,000hrs L70B50

Code	Description	Optic Finish	Fixture Power (W)	Luminous Flux (lm)	Efficacy (lm/W)	Colour Temp (K)	CRI	Dimmable	Control Technology
<b>Surface &amp; Suspended Asymmetric - 1200mm</b>									
3000K - CRI80									
2021676	Optix S 1200 ASYMMETRIC 3000K	Reflector	30	3,380	113	3,000	>80	-	-
2021677	Optix S 1200 ASYMMETRIC 3000K DALI	Reflector	30	3,380	113	3,000	>80	Yes	DALI
2021678	Optix S 1200 ASYMMETRIC 3000K SSC	Reflector	31	3,380	109	3,000	>80	Yes	SylSmart Standalone
4000K - CRI80									
2021679	Optix S 1200 ASYMMETRIC 4000K	Reflector	30	3,480	116	4,000	>80	-	-
2021680	Optix S 1200 ASYMMETRIC 4000K DALI	Reflector	30	3,480	116	4,000	>80	Yes	DALI
2021681	Optix S 1200 ASYMMETRIC 4000K SSC	Reflector	31	3,480	112	4,000	>80	Yes	SylSmart Standalone
<b>Surface &amp; Suspended Asymmetric - 1500mm</b>									
4000K - CRI80									
2021734	Optix S 1500 ASYMMETRIC 4000K	Reflector	37	4,250	115	4,000	>80	-	-
2021735	Optix S 1500 ASYMMETRIC 4000K DALI	Reflector	37	4,250	115	4,000	>80	Yes	DALI
2021736	Optix S 1500 ASYMMETRIC 4000K SSC	Reflector	38	4,250	112	4,000	>80	Yes	SylSmart Standalone

## Photometric Data

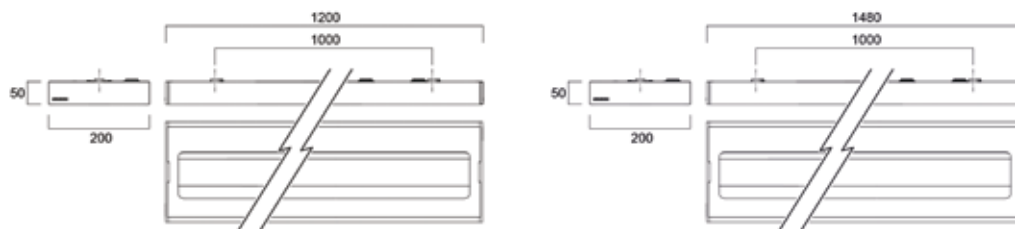


1200mm 3000K

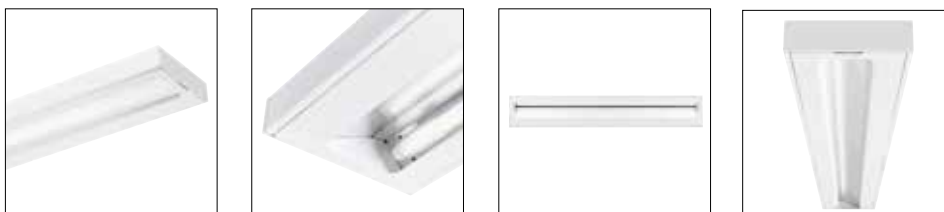
1200mm 4000K

1500mm 4000K

## Dimensions (mm)



## Additional Images



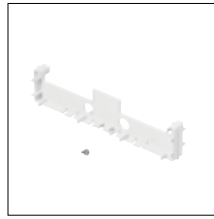
# Concord Optix Surface



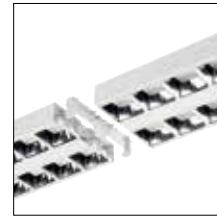
## Accessories

Code	Description
<b>Mechanical Accessories</b>	
2021712	OPTIX S PLASTIC JOINING KIT*
5054686	UNIVERSAL SUSPENSION KIT 1.5M*
2021713	OPTIX S 2L INFILL 600mm*
2021714	OPTIX S 2L INFILL 900mm*
2021715	OPTIX S 2L INFILL 1200mm*
2021716	OPTIX S 2L INFILL 1500mm*
0044100	WALL BRACKETS*
<b>Suspension with Electrical Connection</b>	
5050568	RANA ACC FULL SUSP + POWER 3CORE SET 1W*
5050571	RANA ACC FULL SUSP + POWER 5CORE SET 2W*
5050574	RANA ACC FULL SUSP + POWER 3CORE SET 1T*
5050577	RANA ACC FULL SUSP + POWER 5CORE SET 2T*
5050604	RANA ACC CEILING ROSE*
<b>Through Wiring Accessories</b>	
2021721	OPTIX LIN ACC THROUGH WIRE 3X1,5MM2*
2021722	OPTIX LIN ACC THROUGH WIRE 4X1,5MM2*
2021723	OPTIX LIN ACC THR WIRE 3X1,5+2X0,5MM2
2021724	OPTIX LIN ACC THR WIRE 2X0,5+2X0,5MM2
2021727	OPTIX LIN ACC THR WRE 3X1,5 1500MM
2021728	OPTIX LIN ACC THR WRE 4X1,5 1500MM
2021729	OPTIX LIN ACC THR WRE 3X1,5+2X0,5 1500MM
2021730	OPTIX LIN ACC THR WRE 2X0,5+2X0,5 1500MM

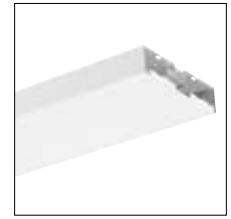
\* Accessory can be used also with Optix Asymmetric Surface & Suspended luminaires



2021712



2021712



2021713-2021716



5054686



5050568



5050571



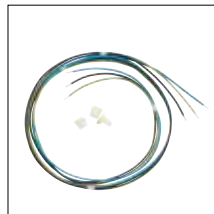
5050574



5050577



5050604



2021721/2021727



2021722/2021728



2021723/2021729



2021724/2021730



0044100

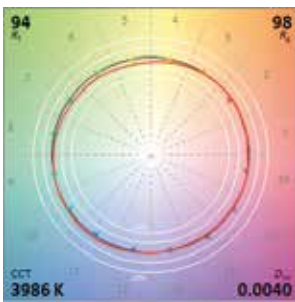


# Concord Optix Surface LUMI Melanopic Ratio & TM-30 data

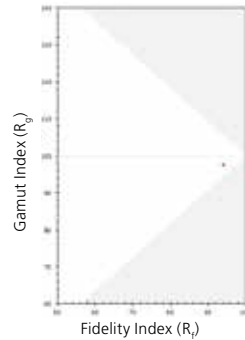
Code	Description	Control Technology	Colour Temp (K)	Melanopic Ratio / MEER	Melanopic Ratio / MDER	Fidelity Index R <sub>f</sub>	Gamut Index R <sub>g</sub>	Fidelity Index (Skin)	CRI	UGR
<b>Optix Surface LUMI Melanopic Ratio and TM-30 data</b>										
<b>LUMI 4000K</b>										
2023827	Optix Surface 1200 2L LUMI 4K ALU	Switch	4000	0.78	0.71	93	98	93	98	<16
2023828	Optix Surface 1200 2L LUMI 4K ALU DALI	DALI	4000	0.78	0.71	93	98	93	98	<16
2023862	Optix Surface 1200 2L LUMI 4K ALU SSA02	Sylsmart Connected	4000	0.78	0.71	93	98	93	98	<16
2023829	Optix Surface 1200 2L LUMI 4K ALU SSC	Sylsmart Standalone	4000	0.78	0.71	93	98	93	98	<16
<b>Tunable White LUMI HCL</b>										
2023830	Optix Surface 1200 2L LUMI HCL TW ALU DALI	DALI DT8	2800	0.52	0.48	97	101	98	98	<16
			4000	0.82	0.74	94	101	94	95	<16
			6200	1.07	0.97	95	99	96	98	<16
2023831	Optix Surface 1200 2L LUMI HCL TW ALU SSC	Sylsmart Standalone	2800	0.52	0.48	97	101	98	98	<16
			4000	0.82	0.74	94	101	94	95	<16
			6200	1.07	0.97	95	99	96	98	<16

## TM-30 diagrams (2023832):\*

### Colour Vector Graphic



### R<sub>f</sub>-R<sub>g</sub> Graphic



The range in possible R<sub>g</sub> values increases as R<sub>f</sub> decreases. The gray shaded area indicates the approximate region of combinations that are not possible for nominally white light sources.

\*Available on request for all LUMI items.



sylvania-lighting.com

A Feilo Sylvania Company

Although every effort has been made to ensure accuracy in the compilation of the technical detail within this publication, specifications and performance data are constantly changing. Current details should therefore be checked with Feilo Sylvania International Group Kft. Copyright Feilo Sylvania International Group Kft. February 2022

T: ..... F: .....  
Email: .....